

# SUNMI L2s PRO Smart Mobile Terminal

Time to PRO your frontline operations.

Powered by  
**SUNMI OS**

Compatible with  
**SUNMI DMP**



## Fast and seamless barcode scanning.

Read scratched, stained, crinkled barcodes up to 1m away even on the high shelves in your warehouse.

## Triple protection.

L2s PRO is specifically designed to sustain rough environments: IP68 rating, 1.5 drop rate and up to 1.2m deep water for 30 min.

## Long battery life enables stable performance.

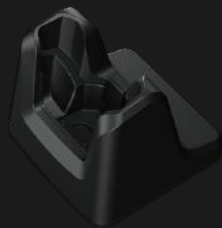
The removable ATL 5000mAh battery features long run time, making L2s PRO a good choice for battery intensive usage. With 18W quick charge, it can be fully charged in 3 hours, further reducing your operations downtime.



## Multiple accessories

### Single Charging Base

Charge the PDA device.



### Charging Base

PDA and battery can be charged simultaneously, an UHF trigger handle can also be charged with the base.



### 4-slot charging base

Support up to 4 PDA charging simultaneously, and can also be charged with a protective case, trigger handle, or hand strap.



### 4-slot battery charger

Support charging up to 4 batteries simultaneously and intelligent battery management.



### Trigger Handle

Further improve your barcode scanning efficiency especially for warehousing, manufacturing and logistics sectors.



### UHF Trigger Handle\*

Read multiple RFID tags at once. Fastest read rate for RFID tags >200 tags/sec. Longest read range for an RFID tag >10M.

\*The read rate and range depend on actual environments.



## Enhanced Performance

Octa-core 2.0GHz processor

Multiple memory config options:  
3+32GB, 4+64GB, 6+128GB

OCTA  
CORE

## Strong Protection

IP68<sup>3</sup>.  
1.5m drop spec<sup>4</sup>.  
Corning Gorilla Glass  
touchscreen for enhanced drop  
and scratch resistance.



NFC



SUNMI OS<sup>1</sup>

Designed for business scenarios.  
Smooth, secure and reliable.



SUNMI DMP<sup>2</sup>

Manage everything of your  
devices.

## High Volume



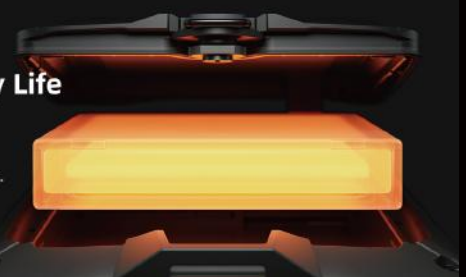
## Fast and Accurate Reading

Read distance up to one meter<sup>5</sup>.  
Read scratched or crinkled barcodes.  
Read barcodes under strong light.  
OCR.



## Long Battery Life

5000mAh battery +  
18W quick charge<sup>6</sup>.  
Long battery runtime.



## SUNMI L2s PRO Tech Specs

### Product Model

T8920

### OS

SUNMI OS  
(\*based on Android 12)  
GMS certified

### Processor

Cortex-A53, octa-core  
(4\*2.0GHz+4\*1.5GHz)

### Memory

3GB RAM+32GB ROM  
4GB RAM+64GB ROM  
6GB RAM+128GB ROM  
(optional)

### Display

5.5" HD+, 1440\*720, IPS  
Capacitive multi-touch

### Camera

Front: 2MP FF  
Rear: 13MP, AF, Flash,  
support 1D/2D  
barcode scanning

### NFC Reader

Supports TypeA&B card,  
Mifare card, Felica card,  
ISO/IEC 14443 and  
ISO15693 compliant

### Scanner

1D/2D barcode scan  
engine

### Speaker

1\* 1.5W

### Card Slot

1\* PSAM  
1\* NANO SIM + 1\* MINI SIM  
1\* MicroSD (TF) up to 256G

### Network

2G&3G&4G

### Wi-Fi

2.4GHz/5GHz  
IEEE 802.11 a/b/g/n/ac

### Bluetooth

Bluetooth 5.0  
BLE

### GPS

AGPS  
GPS, Glonass, Beidou,  
Galileo

### MIC

2\* MIC

### Buttons

1\* Power on/off button  
1\* Custom button  
2\* Volume (+/-) button  
2\* Scan button (left/right)

### Ports

1\* Audio jack  
1\* Type-C USB OTG supported  
2\* Pogo pin at the bottom for charging  
8\* Pogo pin on the back for accessories

### Sensor

Gravity Sensor,  
Light Sensor,  
Compass, Distance Sensor,  
Barometer Sensor (optional)

### Battery

Removable polymer lithium  
battery, 3.8V/5000mAh

### Power Adapter

Input: AC 110-240V  
Output: 9V 2A / 5V 2A  
\*Vary from different versions

### Dimensions (L\*W\*H)

154.4\*74.6\*17.1mm

### Total Weight

250g  
\*Vary from different versions

### Protection Level

IP68  
1.5m drop test  
\*Data from Third-party Lab

### Environment

Operating temperature:  
-20°C~55°C  
Storage temperature:  
-40°C ~ 70°C

### Accessories (optional)

Single charging base, Charging base, Trigger handle, UHF trigger handle, Hand strap (included), 4-slot charging base, 4-slot battery charger, Protective case, Screen tempered glass

1. Based on Android 12, SUNMI OS is customized for business scenarios.

2. Some features may be unavailable due to GMS restrictions.

3-5. Certified by third-party authorities.

6. Quick charging functions optional.

7. The usable memory may be less than the installed memory.

8. All specifications are subject to change without (prior) notice.