

PT58A

Compact. Stable.
Any Angle.

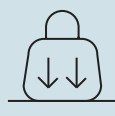


Features

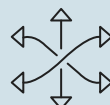
- Aluminum die-casting structure for strong & stable operation.
- Easy access/service M.2 SSD cover.
- Rubber gasket frame sealing front bezel design for IP65 resistance.
- Comprehensive dual-side mounting support of peripherals.
- Innovative heat-dissipation fan-less operation design.
- 4.8mm Super Slim Edge Bezel.
- VESA 75 for Pole/Wall Mounting.
- Supports USB-C for function expansion (VarilO I / O Box)
- Extendable IO capability meets any project specification (VarilO I / O Box)



Intel Core
CPU



Die-Cast
Aluminum Casing



Versatile
peripherals



Front Panel
IP65 Spill Proof

Sleek Display, Smart Integration.

Slim. Sleek. Stunning.

- 15.6" 16:9 Full HD display for stunning clarity.
- 4.8mm ultra-slim bezel design.
- 250 nits brightness for optimal visibility.
- Responsive PCAP multi-touch screen.



Flexibility

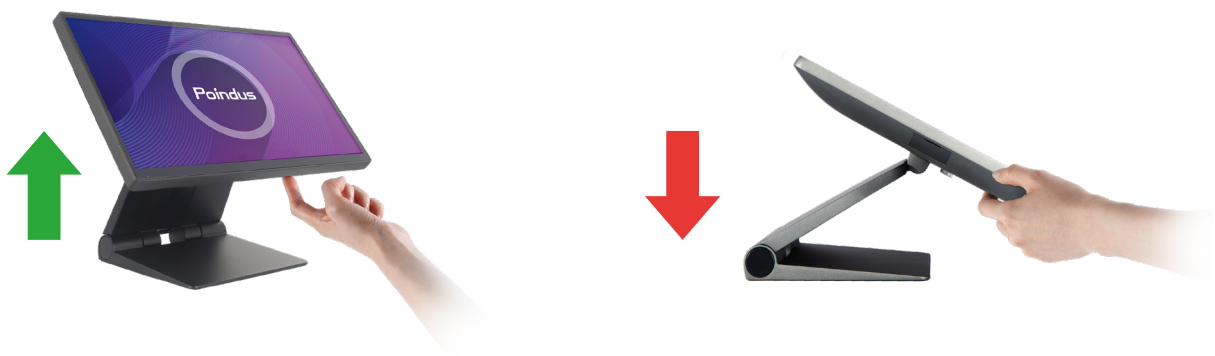
Dual-Hinge Design

- Ultra-flexible tilt range for any viewing angle.
- Stable, secure base for confident daily operation.
- Space-saving design with clean, modern aesthetics.



Single Finger Lift Up, Force Pressure Down

Dual force adjustment with light pressure to raise, firmer force to lower for easy adjustment and stable positioning.



Heat-Dissipation Solution

System Stability for Demanding Workloads

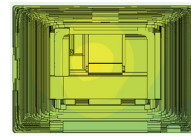
- Fanless design for silent and reliable operation.
- Full back cover functions as a heatsink for efficient CPU and system cooling.
- 12% improvement in thermal efficiency for enhanced performance.
- Increased MTBF and system stability under demanding workloads.

Without heat-dissipation solution

System Front View



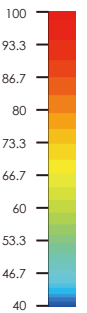
System Back View



MB



Temperature (degC)

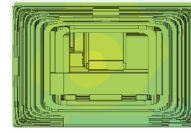


With heat-dissipation solution

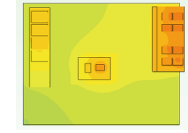
System Front View



System Back View



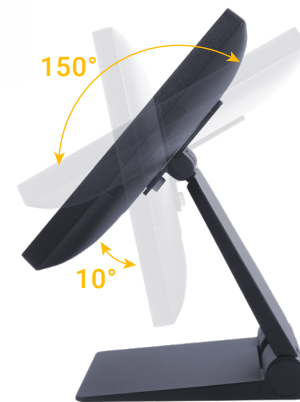
MB



Adaptive Viewing

Versatile Display Adjustment for Improved Usability

- Tiltable main display for adjustable viewing angles.
- Triple-hinge 10.1" 2nd display for greater environment compatibility.
- Tilt, swivel, and height flexibility for optimal viewing.



SoftPOS Payment Support

Empowering Transactions with Smart 2nd Display

- 10.1" 2nd display for interactive payment.
- Supports Windows-compatible SoftPOS with NFC payment.
- Simplifies checkout and enhances experience.



Extended connectivity & functionality

VarilO I/O Box Expansion for Scalability

- Extend connectivity, with additional LAN, COM & Powered USB connectivity.
- VarilO I/O Box is customizable to meet project connectivity requirements.
- Connected via a single custom high-speed USB Type C connector to maintain high I/O transfer rates.
- During maintenance VarilO I/O Box and peripherals can remain in place simply by disconnecting a single cable.



Peripherals

Full Range of Peripherals for Tailored Deployments

- Modular 2nd display options for flexible configuration. Plus a range of Full Size Customer Displays.
- Adaptable designs to fit diverse requirements.



▲ 2nd display 15.6"



▲ 2nd display 10.1"



▲ 2x20 LCM



▲ fingerprint



▲ Barcode Scanner



▲ iButton

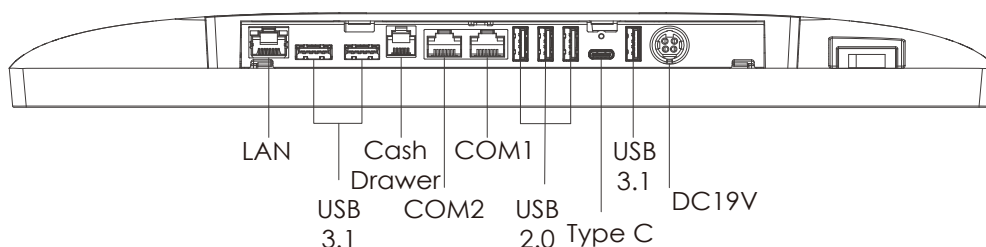


▲ RFID



▲ MSR

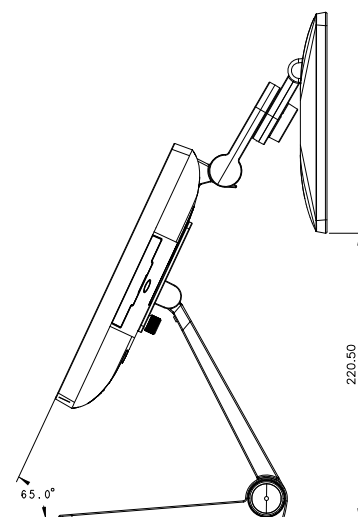
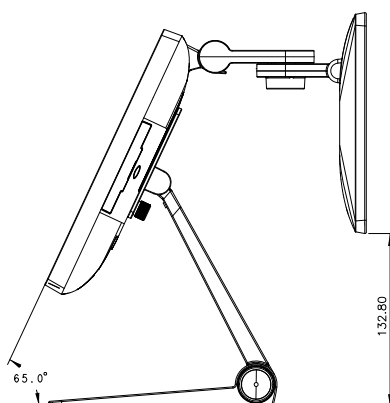
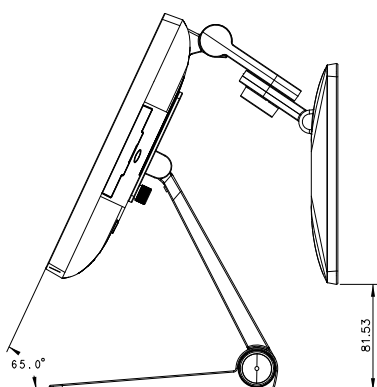
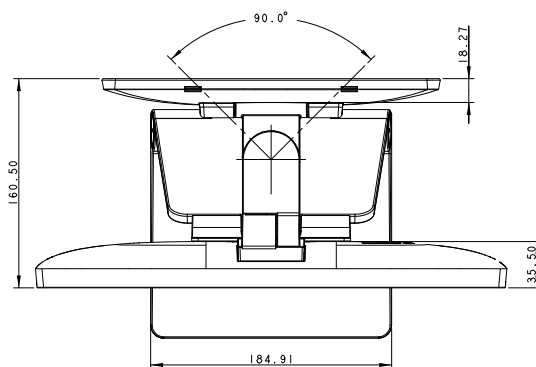
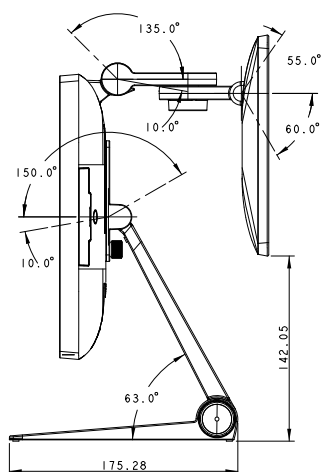
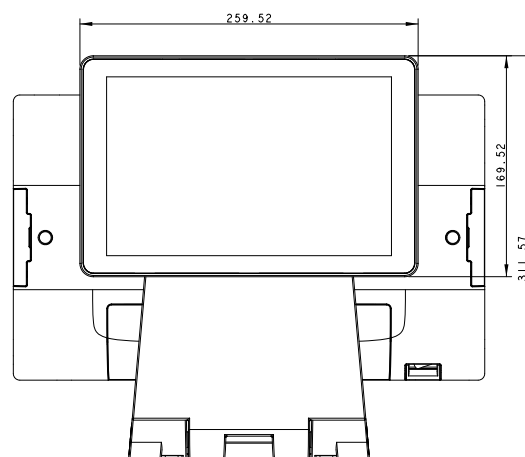
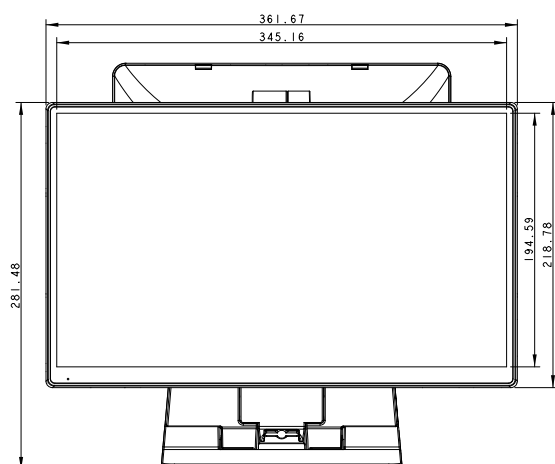
IO Panels (PE24/PE26)



Technical Specifications

| | |
|-----------------------------------|--|
| System Information | <p>PE24 Intel® Elkhart Lake Celeron up to 2.60 GHz</p> <p>PE26 Intel® Alder Lake-P Platform - Core i5 up to 4.4 GHz - Core i3 up to 4.4GHz</p> <p>System Memory - PE24: 1 x 8GB DDR4 SO-DIMM memory (Max. support up to 16GB) - PE26: 1 x 8GB DDR5 SO-DIMM memory (Max. support up to 32GB)</p> <p>TPM - Intel® F/W</p> |
| Display & Touch | <ul style="list-style-type: none">- 15.6" 16:9 TFT LCD, Full HD Display, resolution 1920x1080- 250cd/m², LED backlight- Super slim bezel true-Flat PCAP multi-touch screen |
| Storage | 1x128GB M.2 SSD as standard |
| Connectivity | <ul style="list-style-type: none">- 3 x USB 3.1 / 3 x USB 2.0- 2 x RJ-48 COM Ports (Support DC+0/5/12V by BIOS setting, default is 0V)- 1 x Type C (DP+PD)- 1 x RJ45 Gigabit Ethernet- 1 x RJ11 support DC24V/12V by Jumper setting, support 2 cash drawers- 1 x DC-jack with lock |
| VarilO I/O Box (Project Based) | <ul style="list-style-type: none">- 1 x RJ11 support DC+12V or 24V (default) port, support 2 cash drawers- 1 x RJ45 Gigabit Ethernet- 2 x USB 3.0, 4 x USB 2.0- 4 x RS-232 (Jumper setting, support DC+0/5/12V, default setting is 0V)- 2 x DC+12V Powered USB- 1 x DC+24V Powered USB- 1 x Type C |
| Audio | 2 x 2W speaker |
| Power | <p>Power Adapter - PE24: 65W adaptor, DC+19V - PE26: 90W adaptor, DC+19V * PUSB will use 180w adaptor</p> <p>LED Indicator 1 for Power LED</p> |
| Mechanical & Construction | <ul style="list-style-type: none">- Front panel IP65- Fanless operation Design- Dimension (WxHxD): 361.67 x 281.48 x 175.28mm- Mounting: Wall / Pole / VESA 75x75- Construction: Die-casting aluminum with plastic covers |
| Environmental | Operating temperature: 0°C ~ 40°C |
| Certification | CE / FCC / LVD |
| OS Support | Windows 10 / 11 (64 bit), Linux |
| Optoinal Accessories | <ul style="list-style-type: none">- 3-Track MSR, USB type- iButton reader, USB type- RFID reader, USB type- Fingerprint reader, USB type- 2D scanner, USB type- 2 x 20 character LCM- 10.1" 16:10 @ 1280 x 800 2nd screen, with or without touch, NFC (Support NFC 13.56 MHz, ISO 14443 A / B, ISO 15693, ISO 18092, FeliCa), USB interface- 15.6" 16:9 @ 1920x1080 2nd screen with or without touch, eDP interface (Project based) |

Dimension



Unit: mm

Poindus Systems Corp. Headquarters

5F, No.59, Ln. 77, Xing-Ai Rd., Neihu Dist.,
Taipei City 114, Taiwan. R.O.C

+886 2 7721 4688

www.poindus.com

sales@poindus.com

Varlink Limited

Unit 1 Osbaldwick Industrial Estate,
Outgang Lane, York, YO19 5UX, UK.

+44 1904 717180

www.varlink.co.uk

ADASYS GmbH

Max-Planck-Str. 10 70806
Kornwestheim, Deutschland

+49 7154 83000

www.adasys.de